



Kramer Control

Enterprise-class AV control platform

Agile, cloud-based and on-premises control - that's simple for all

Deliver advanced, user-friendly control in any space, quickly and easily. A cloud-based, enterprise-class AV control platform with an on-premises option, Kramer Control transforms the control experience, end-to-end. Going far beyond the traditional boundaries of AV, it enables control of any in-room AV and automation devices, from anywhere. The rich library of control templates, intuitive drag & drop creation of the control interface, and instant deployment to multiple spaces together make deploying and making changes to AV control a breeze – no programming needed. End-users can operate any room with ease, through the simple touch interface. Quite simply, this is control the way everyone wants it.





Easily set up and control any space, from anywhere

Effortless configuration and personalization

Easily install, configure, and modify your control system – no programming needed! The intuitive drag & drop Kramer Control Builder makes UI personalization effortless. Start with predefined, space-specific templates designed by our UI/UX experts and easily personalize them to your needs. With borderless control, you can set up your control system from anywhere, even the other side of the world.

Fast deployment

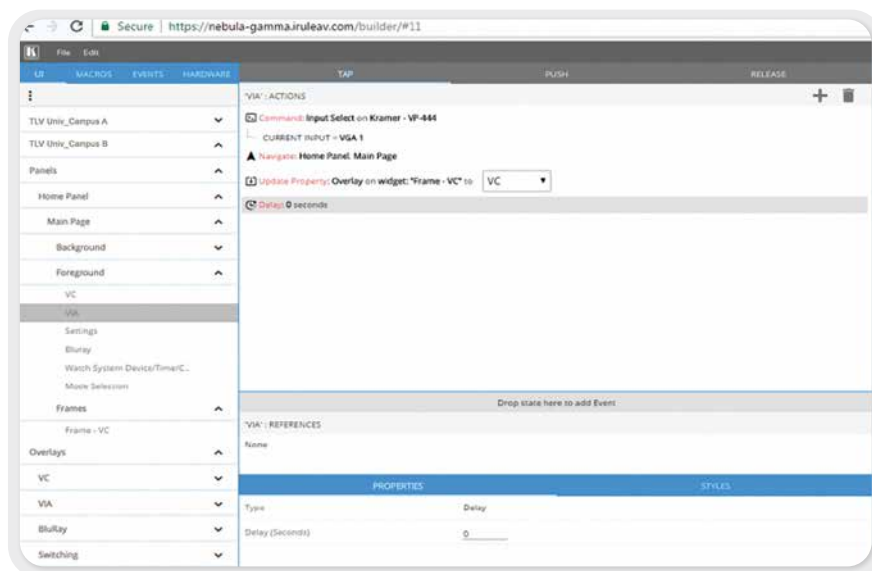
With the help of predefined templates, you can instantly build spaces and implement them without writing a single line of code. Copy and clone any space to create infinite identical spaces in seconds; and control all your spaces from one simple, IT-monitored installation – keeping things fast and easy across the board.

Versatile control

Kramer Control supports all control needs in any space, including audio, video, collaboration, and AV infrastructure – one control builder, one design, any device. The on-premises option extends Kramer Control ease and flexibility to anywhere high security is a must.

Always up-to-date

All Kramer Control components are automatically and seamlessly updated from the cloud, with no actions needed onsite. No more tedious definition changes or manual updates, no more device software upgrades.





Robust control for large-scale deployments

Outstanding functionality, superior stability

Featuring outstanding compute power and enhanced management capabilities, the KC Virtual Brains can be installed in-room, or anywhere on the LAN, for easy control with a single brain over large-scale installations and complex spaces equipped with numerous devices. Further maximizing functionality and stability, the Control Brains and Device Driver Editor support an extensive range of authentication methods and protocols, ensuring that user login is always stable and secure.

Secured, IT-friendly control

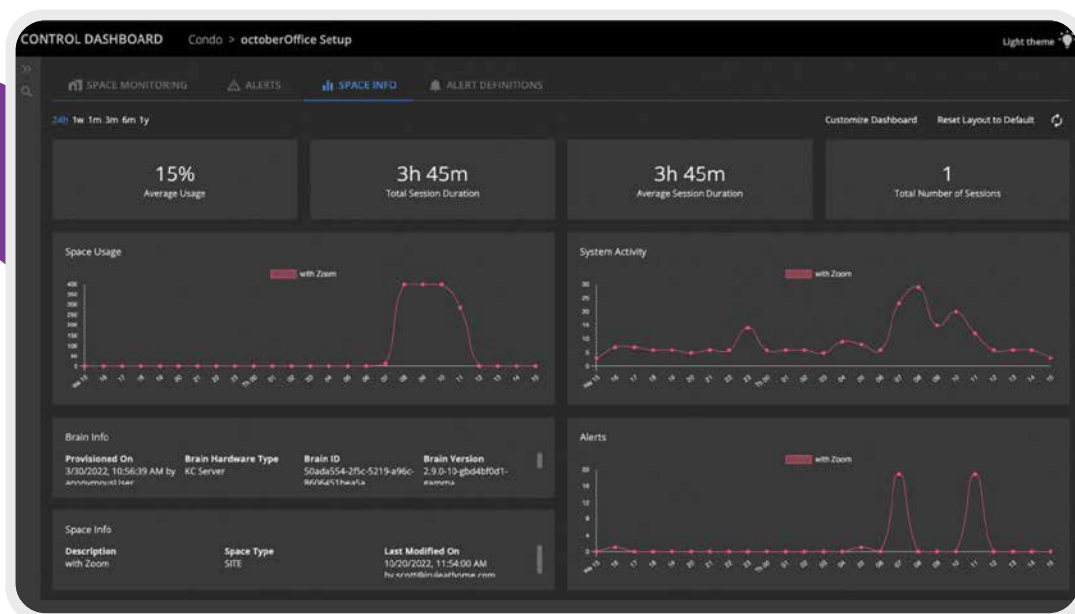
Deploy your control solution with confidence, even in the most security-sensitive environments. Choose the mode that best suits your requirements:

- Cloud + online brain – Kramer Control works on the cloud, with online connectivity for regular data updates to the cloud.

- Cloud + offline brain – The control is built on the cloud, but the brain is configured to work in offline mode, so no data is sent to the cloud.
- On-premises – An end-to-end local solution, using Kramer's On-Premises Builder device.
- Kramer's new Android 11-based touchscreen panels come with built-in security, further protecting the network and connected devices.

Advanced dashboard

Stay on top of device and AV network status in real time, with customized alerts and an advanced dashboard. With the status of all brain machines visible at a glance, and the ability to effortlessly search every dashboard element, users can easily focus on priority data and information.





Seamless end-user experience

Make controlling a space as easy and intuitive as using a smartphone. End-users can control AV and other in-room devices through a simple touch interface – enabling them to focus on their actual work instead of working to control the room.

Intuitive control

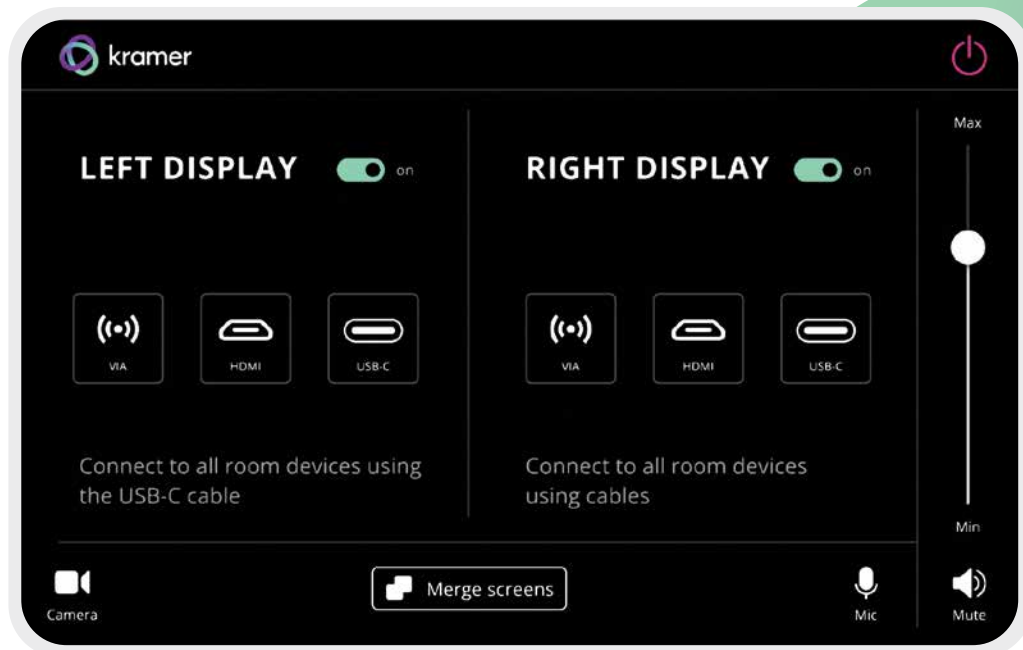
Operating any space is effortless, even for inexperienced guest users. The predefined templates are optimized for fast and intuitive use by anyone. You can use Kramer Control on Kramer touchscreens, available in 8”, 10”, and 15” formats, or on any device.

Full room control at a touch

Give users one-touch control of the entire space. Kramer Control enables users to operate all in-room technology, including cameras, microphones, displays, lights, window shades, and thermostats, all from the same touchscreen or keypad.

Control with Microsoft Teams®

Kramer Control also offers the option to control rooms using Microsoft Teams® solutions. For installations requiring MTR certification, Kramer Control can run on a Yealink MTR-certified tablet.





About Kramer

Kramer audio-visual experiences power creativity, collaboration, and engagement. From AVSM to advanced cloud-based communication, collaboration and control solutions, Kramer creates audio-visual experiences that are more engaging, more inclusive and more connected than ever before. Headquartered in the heart of Startup Nation - Tel Aviv, Israel, with locations around the world, Kramer's audio-visual experts are designing the future of engagement technology. Physical and digital boundaries have blurred. But no matter how hybrid our world becomes, our desire for real, human connection will never cease. Kramer's intuitive, seamless technology breaks down walls, bridges gaps, and makes people feel closer together even when they're far apart.



www.kramerav.com